



# weighpack

## BWS 50

### Basic semi-automatic weigh/count system

Product will be fed automatically through the bulk feed until 98% of the required weight is reached. The last 2% will be manually fed until the final weight or count is reached. The bulkfeed can be easily adjusted to reach optimum speeds and accuracy over a broad range of products. The control console will display either the weight or count of product.

Before every weighing, a tare operation can be set to eliminate the weight of the packaging container. All dangerous and moving parts are fully shielded according to European (CE) and USA (OSHA) safety requirements.

#### OPTIONS AVAILABLE

- Lift & tip units
- Hopper storage capacity
- Built in fine feed finger
- Automatic box transfer
- Bag Clamp
- Registration printer
- Others on request



Photography: Victor Soudier



#### TECHNICAL SPECIFICATION

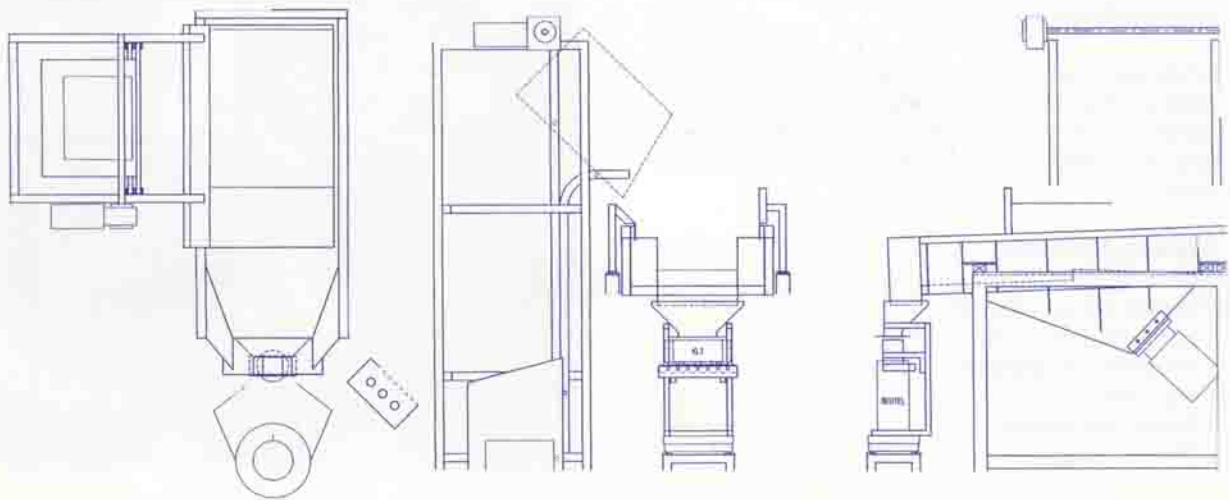
<b>Product range:</b>	Screws, bolts, nuts, nails
<b>Product dimensions:</b>	5 x 5 mm up to 24 x 150 mm
<b>Product weight:</b>	up to 650 grammes.
<b>Weight range:</b>	2,5 - 50 kg
<b>Output (free flow):</b>	80 kg/minute max.
<b>Accuracy:</b>	depending on piece weight
<b>Box dimensions:</b>	300 x 400 x 400 mm max.
<b>Bag dimensions:</b>	300 x 450 mm
<b>Power consumption:</b>	2 kw
<b>Main supply:</b>	3 x 380 volts
<b>Air consumption:</b>	depends options

Note: Maximum speed will depend on product, box or bag size and style and will be quoted for each application. Detailed machine specifications are supplied with quotation.



# weighpack

## BWS 50 Basic semi-automatic weigh/count system



The Weighpack BWS 50 semi-automatic weighing system is a basic, easy to use, low cost machine for the filling of bags, boxes, KLT returnables and other similar containers. The basic set up of the system consists of 3 major parts; a lift and tip unit, a bulk storage hopper, a feed tray and a high impact weigh platform.

A Weighpack LU type lift and tip unit discharges a product container (customer standard) into an electro magnetically driven vibratory bulk hopper. All Weigh-pack vibratory hoppers are lined with a special wear resistant high density "Rhino Hide" coating. This coating minimizes product damage, optimizes product transportation improves noise reduction.

A vibratory feed tray mounted on a high impact resistant preweigh system allows complete control of product flow form the bulk hopper directly into the bag or box positioned on the weigh platform.



weighpack